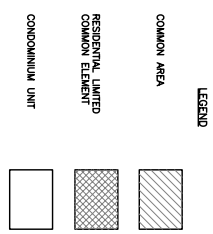
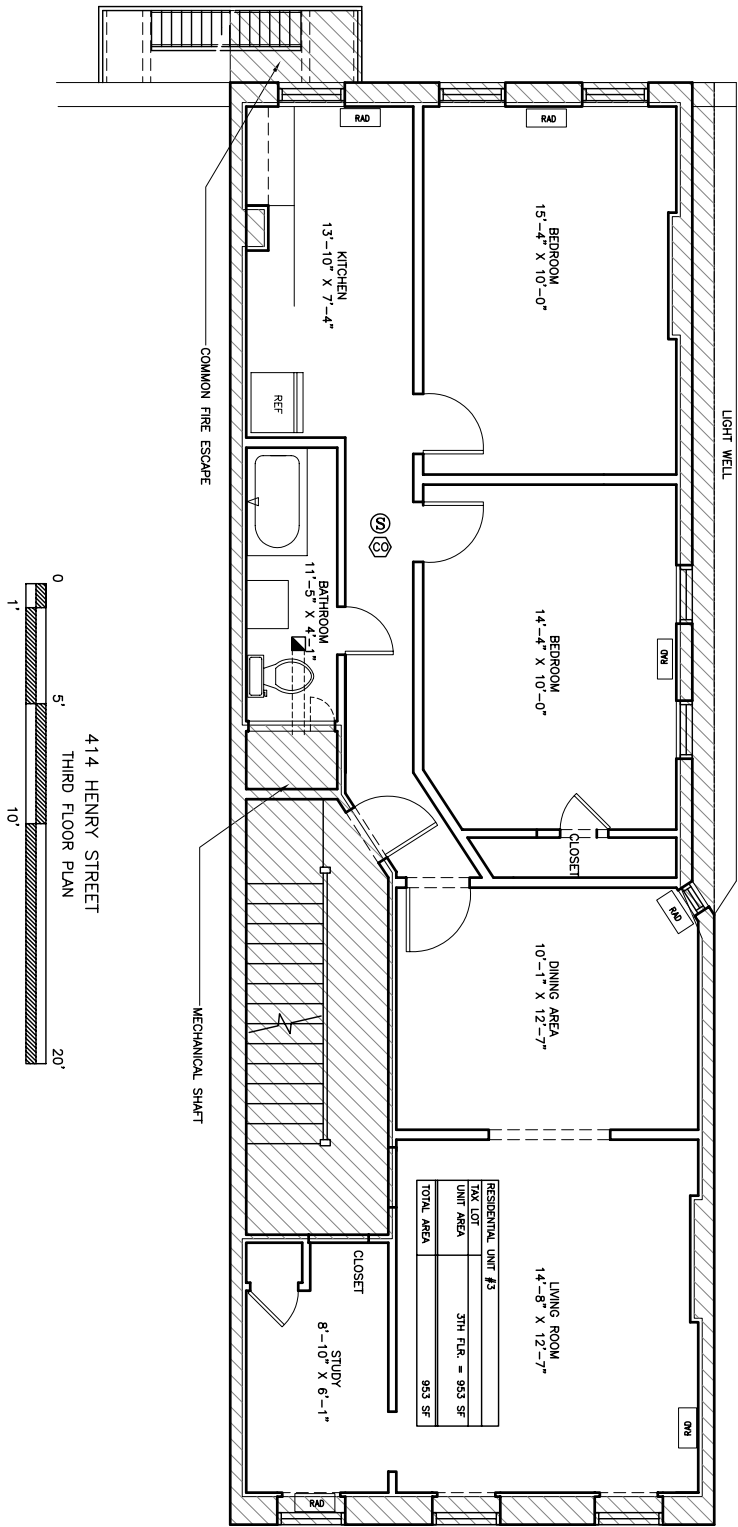
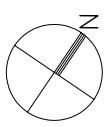
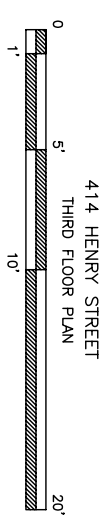


REVISED 5-30-2007



RESIDENTIAL UNIT #3	
TAX LOT	3TH FLR. = 953 SF
UNIT AREA	953 SF
TOTAL AREA	953 SF



414 HENRY STREET BROOKLYN NY 11201  
UNIT # 3  
THIRD FLOOR AREA (953 SF.)